

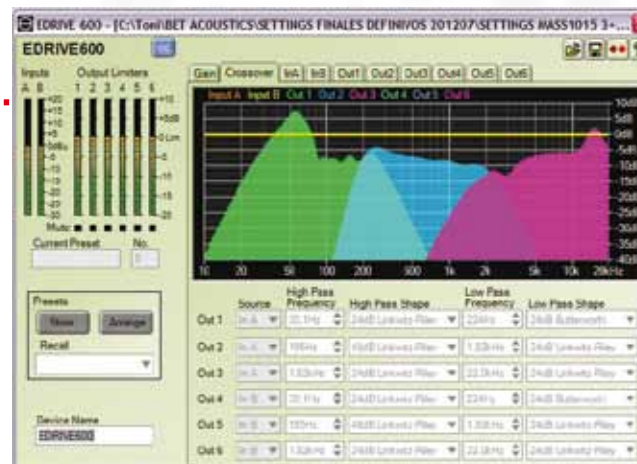
EDRIVE600

processors

The 2x6 DSP audio processor featuring 24bits - 96kHz in a simple and effective management environment.

Key features

- 2x6 DSP processor running at 24bits - 96kHz
- Top quality AD/DA converters
- Butterworth, Bessel and L-R crossover filters
- Featuring Hardman 8th exclusive non-linear sharp slope filtering
- Selectable crossover slopes: from 6 dB/octave to 48 dB/octave
- Parametric (up to 6 eq points) and shelving eq in all inputs and outputs with no DSP limits at anytime
- Available delays in both INPUTS and OUTPUTS
- Output limiter
- Real time system set up and VU-meter monitoring of all INPUTS and OUTPUTS
- Up to 45 memory bank locations for user programs
- Launch panel function helps identifying working device
- Lock out function
- Electronically balanced INPUTS and OUTPUTS
- 2x24 character backlit LCD
- Fully configurable from PC via EWARE PC based control software



Applications

- Stereo 3 way loudspeaker management
- 2 way L,C,R configurations
- 1 input/6 output mono signal processor

Tech. Characteristics

EDRIVE600

General	Inputs	2
	Input Impedance	>10k Ω , electronically balanced
	Maximum Input level	+20dBu
	Outputs	6
	Output Impedance	<100 Ohm, ground balanced
	Maximum Output Level	+20dBu into 600ohms load
	Sample Rate	96kHz
	Bit Depth	24 bit
	Frequency Response	10Hz to 40kHz, +/- 3dB (filters disabled) 20Hz to 20kHz, +/- 0.5dB (filters disabled)
	THD	<0.01%, (+10dBu, 20Hz to 20kHz, 30kHz bandwidth)
	Dynamic Range	>112dB (A weighted, 22kHz bandwidth) >109dB (un-weighted, 22kHz bandwidth)
	Serial Comms Data	38.4kbaud, format: 8 data, 1 stop, no parity
	Gain	+20dB to -80dB and mute, 0.2dB steps
Processing	Output Ch. Source	Input A, Input B and SUM
	HP filter frequency	Off, 10Hz to 25.4kHz, 1/36 octave steps
	LP filter frequency	10Hz to 25.4kHz and off, 1/36 octave steps

EDRIVE600

Connectors	LP / HP filter type	12, 18 & 24dB/octave Bessel and Butterworth 12, 24 and 48dB/octave Linkwitz Riley 4th or 8th order Hardman
	Delay	Input 400ms, output 80ms
	Limiter	High performance limiter, adjustable threshold in 0.2dB steps, automatic time constants
	EQ frequency	10Hz to 25kHz, 1/36 octave steps
	EQ gain	+15dB to -15dB, 0.2dB steps
	EQ width	5.0 to 0.1 octaves bandwidth, 1/36 octave steps
	Audio inputs	3 pin female XLR
	Audio outputs	3 pin male XLR
	Serial comms	Future option
	Network comms	Future option
	Mains	3 pin IEC
	Mains Power	Universal switch-mode PSU, 90V to 264V AC, 47/63Hz
	Consumption	20VA
	Dimensions	44mm (H), 482mm (W), 254mm (D)
	Weight	2.7 Kgs net

Accessories

- EDRIVE is provided with **EWARE** control software for accurate remote unit set up and RS232 cable.